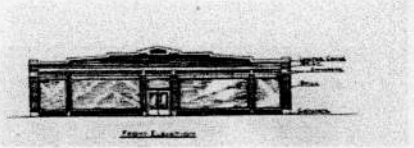
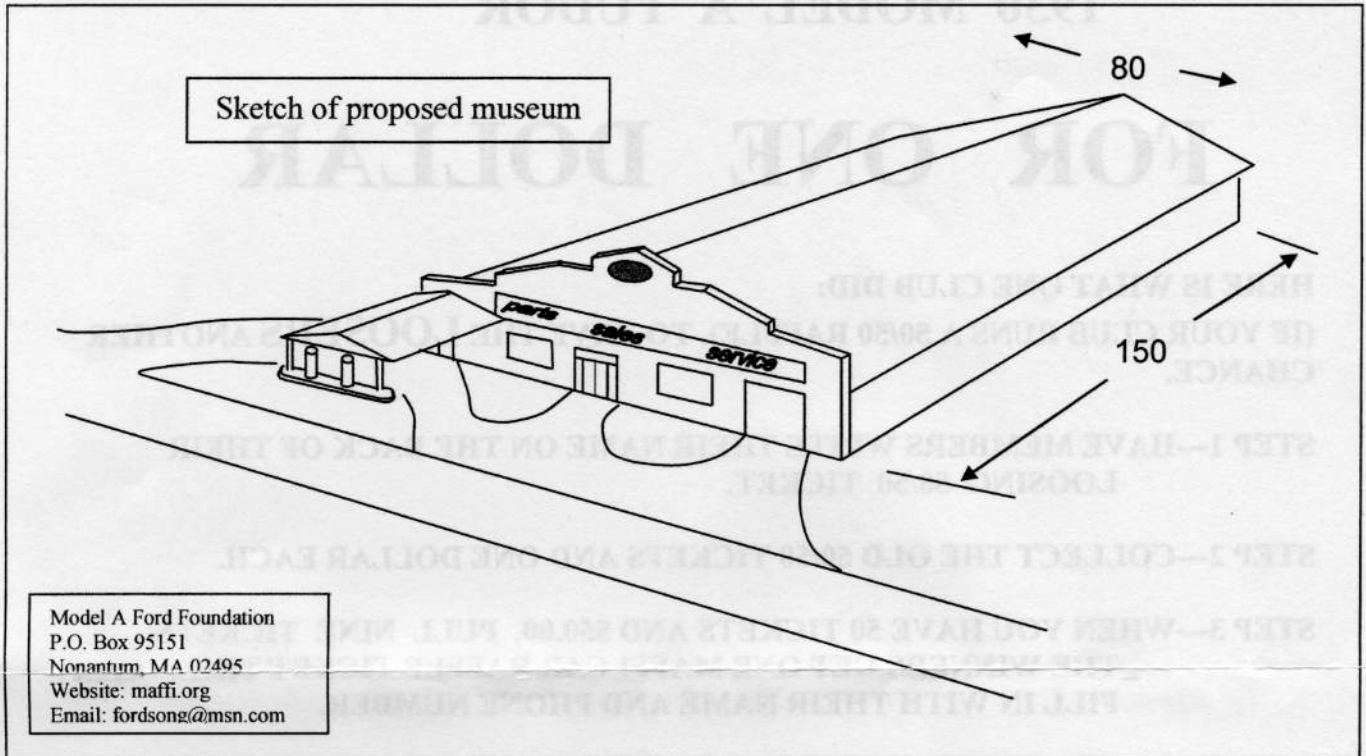




**Model A Ford Museum Fund Drive**  
Sponsored by  
**The Model A Ford Foundation, Inc.**



## Request for Funding



### Basic Facts behind the Museum Fund Drive –

Item to be funded: Model A Ford Museum

Location: Gilmore Car Museum Complex, Hickory Corners, Michigan

Total Fund Drive Goal - \$1,600,000

Objective: Construct and outfit a 12,000 square foot museum building

Purpose: To educate current and future generations about the story of the Model A Ford and its historical setting which includes the Roaring 20's, the crash of Oct 29, Lindbergh flight and many other historic events. The Gilmore Car Museum has educational programs in coordination with local schools.

History: The museum has been a goal of the Model A Ford Foundation, Inc, a 501c3 Educational Charity, since its founding in 1987. Two other national Model A Ford clubs (Model A Restorers Club & Model A Ford Club of America) also support this goal. To date the Model A community has donated \$400,000 toward the museum.

Design: The planned design of the museum will make use of a Model A-era drawing published in a magazine for Ford Dealers in May 1929. This authentic era style will fit well in the rural campus of the Gilmore Car Museum which has its own collection plus multiple car club museums as well as an era gas station, roadside diner, research library and gift store.

Opportunity: The Model A Museum Fund Drive provides an opportunity for donors to leave a lasting and visible legacy of their appreciation for the Model A Ford, it's era, and have their name etched in the masonry as recognition of that appreciation for the car and the important era it represents.

Timetable: The goal is to break ground in 2011. When the fund drive reaches a level that assures full payment for the building, negotiations will begin with a design/build contractor.

TO MAFFI LIAISON AND FRIENDS:

**ONE OF YOUR MEMBERS CAN WIN A  
1930 MODEL A TUDOR**

**FOR ONE DOLLAR**

**HERE IS WHAT ONE CLUB DID:**

**(IF YOUR CLUB RUNS A 50/50 RAFFLE), TO GIVE THE LOOSERS ANOTHER  
CHANCE.**

**STEP 1—HAVE MEMBERS WRITE THEIR NAME ON THE BACK OF THEIR  
LOOSING 50/50 TICKET.**

**STEP 2—COLLECT THE OLD 50/50 TICKETS AND ONE DOLLAR EACH.**

**STEP 3—WHEN YOU HAVE 50 TICKETS AND \$50.00, PULL NINE TICKETS.  
THE WINNERS GET ONE MAFFI CAR RAFFLE TICKET TO  
FILL IN WITH THEIR NAME AND PHONE NUMBER.**

**STEP 4—SEND THE 9 CAR RAFFLE TICKETS AND \$50- TO:**

**MAFFI CAR RAFFLE  
PO BOX 95151  
NONANTUM, MA. 02495**

**EACH DOLLAR WILL HELP BUILD  
“THE MODEL A MUSEUM”**

**YOU CAN DO THIS AT EVERY MEETING UNTIL NEXT APRIL.**

**THE BIG DRAWING IS AT THE SAN DIEGO MARC MEET, JUNE 2011.**

**NEED MORE TICKETS: email [Fordsong@msn.com](mailto:Fordsong@msn.com)  
or write to P O BOX 95151**

**\*\*\*IF YOUR CLUB DOESN'T DO 50/50's, USE TAGS OR CARDS.\*\*\***

**HELP PRESERVE THE MODEL A ERA**